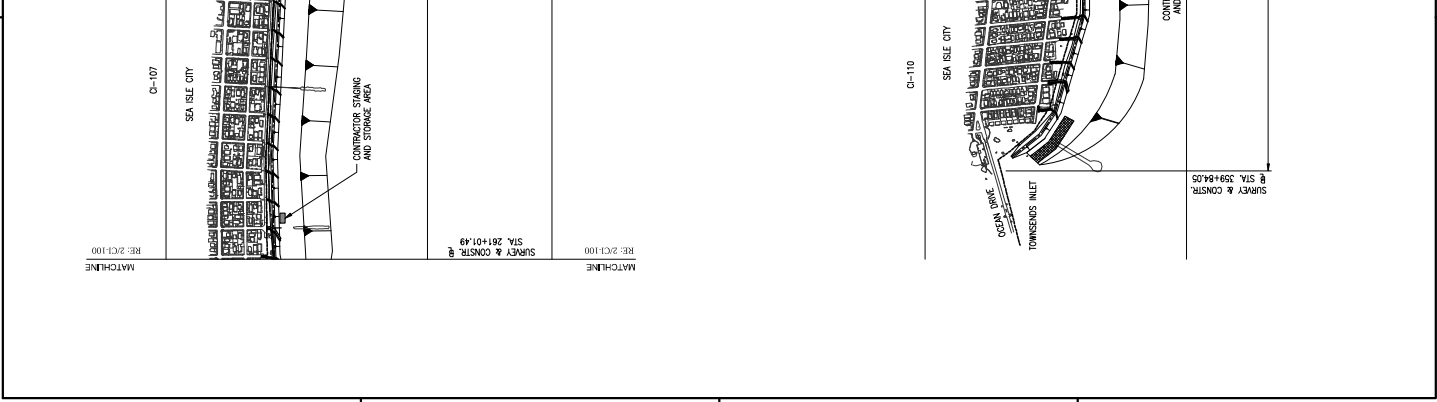
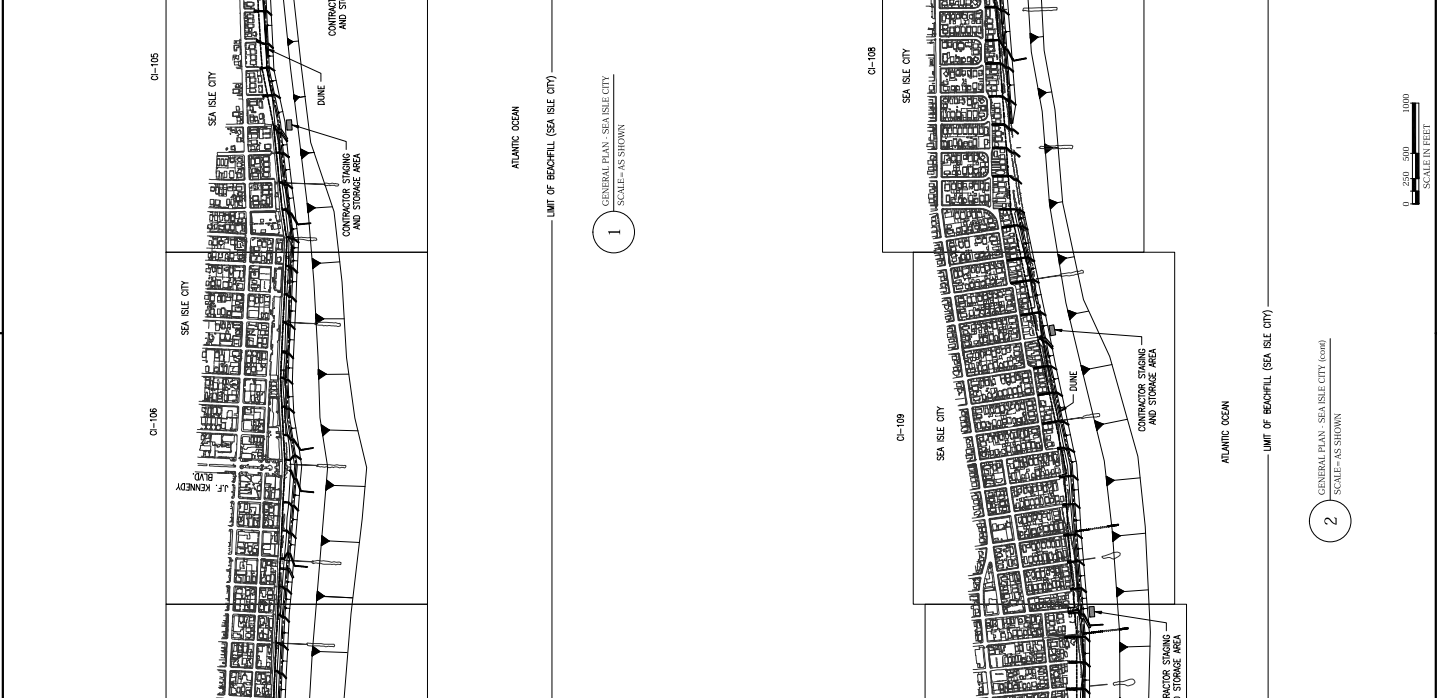
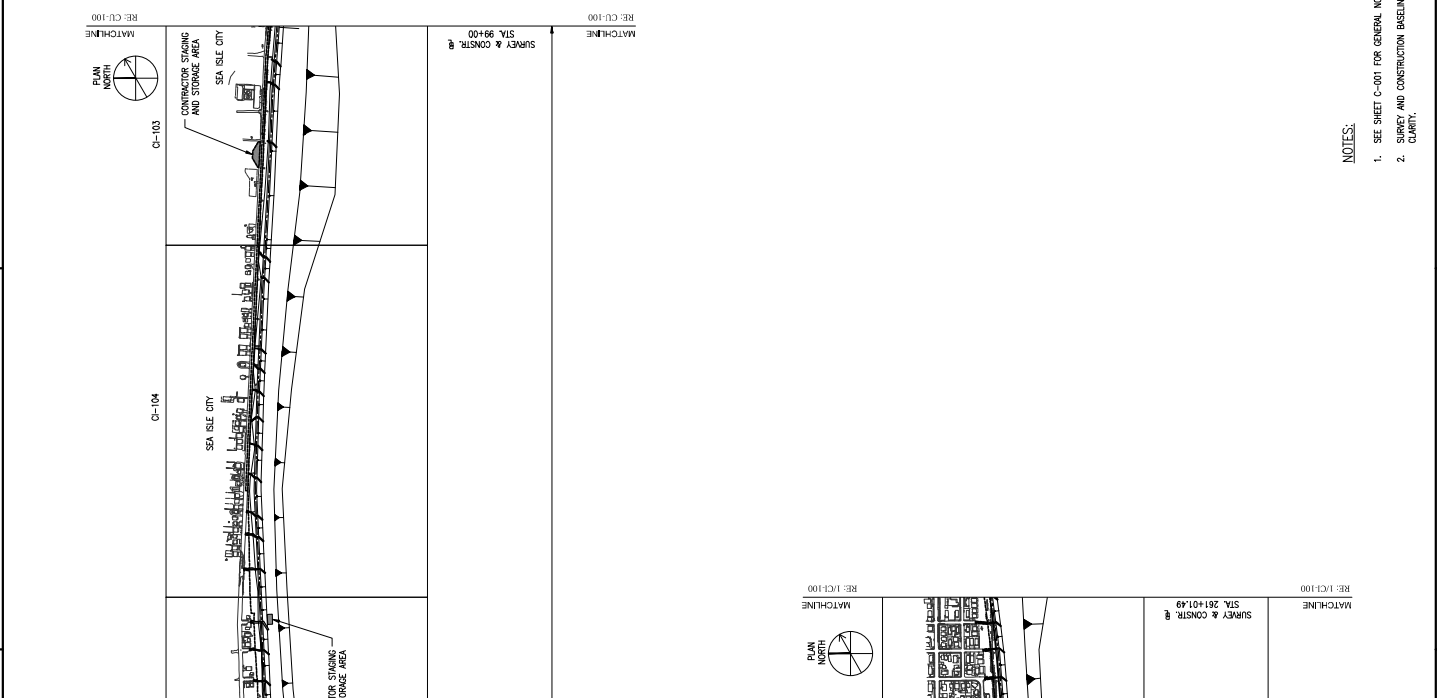
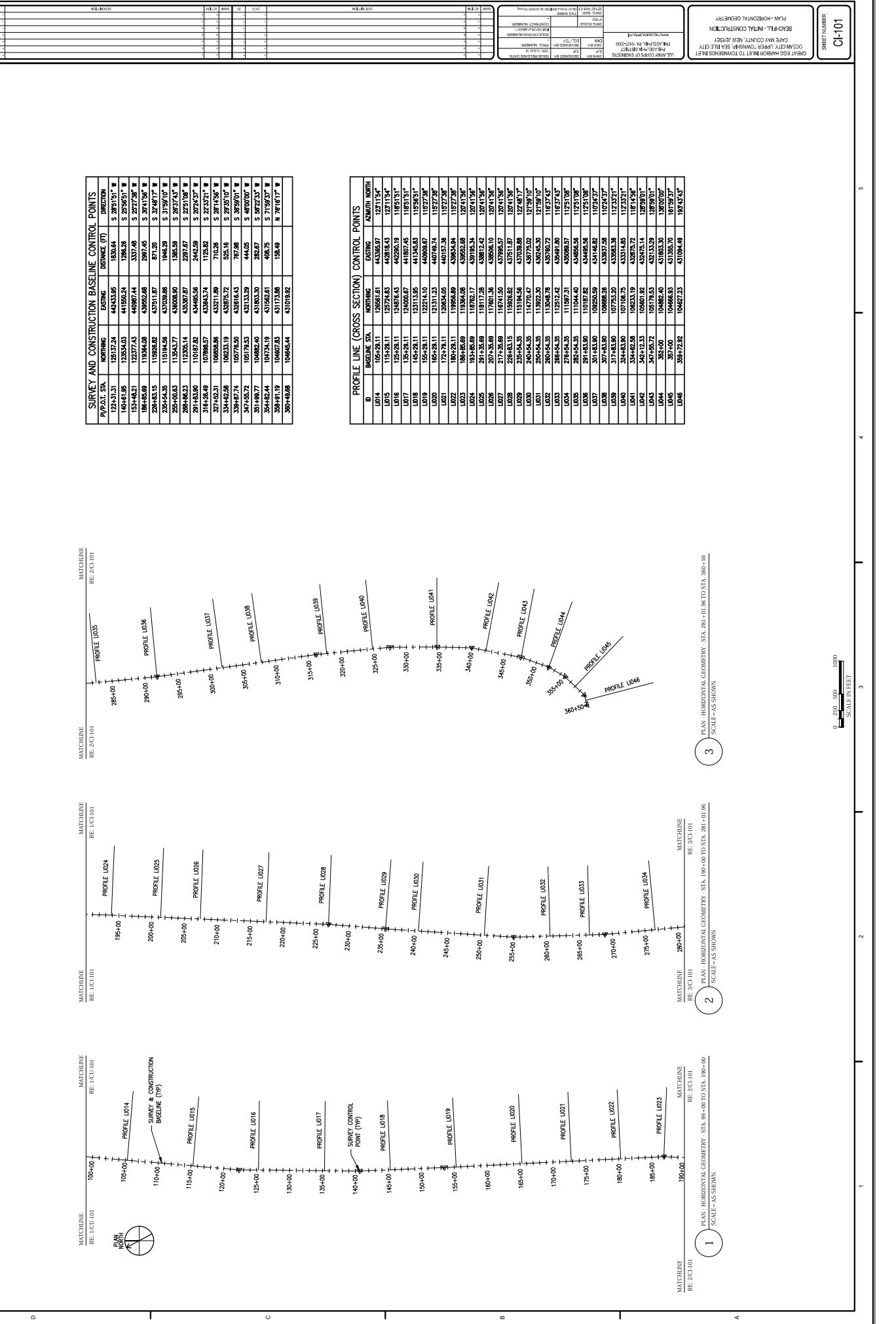


SHEET NUMBER				CH-100			
<p>BEACHFILL - INITIAL CONSTRUCTION OCEAN CITY, UPPER TOWNSHIP SEA ISLE CITY CAROLINA COUNTY, NEW JERSEY</p>							
<p>GENERAL PLAN</p>							
<p>U.S. ARMY CORPS OF ENGINEERS WASHINGTON, D.C. CIVIL ENGINEERING DIVISION PHILADELPHIA OFFICE COL. J. H. KENNEDY, CHIEF MR. S. A. GARDNER, SUPERVISOR MR. J. W. MCELROY, ENGINEER MR. J. H. MCELROY, ENGINEER MR. J. H. MCELROY, ENGINEER MR. J. H. MCELROY, ENGINEER</p>							
<p>DATE: 11/15/58 DRAWN BY: J. H. MCELROY CHECKED BY: J. H. MCELROY ENGINEER: J. H. MCELROY PROJECT NUMBER: 62-1-110 SHEET NUMBER: CH-100 SHEET TITLE: BEACHFILL - INITIAL CONSTRUCTION</p>							

- NOTES:
1. SEE SHEET C-101 FOR GENERAL NOTES AND LEGEND.
 2. SURVEY AND CONSTRUCTION BASELINE NOT SHOWN FOR CLARITY.



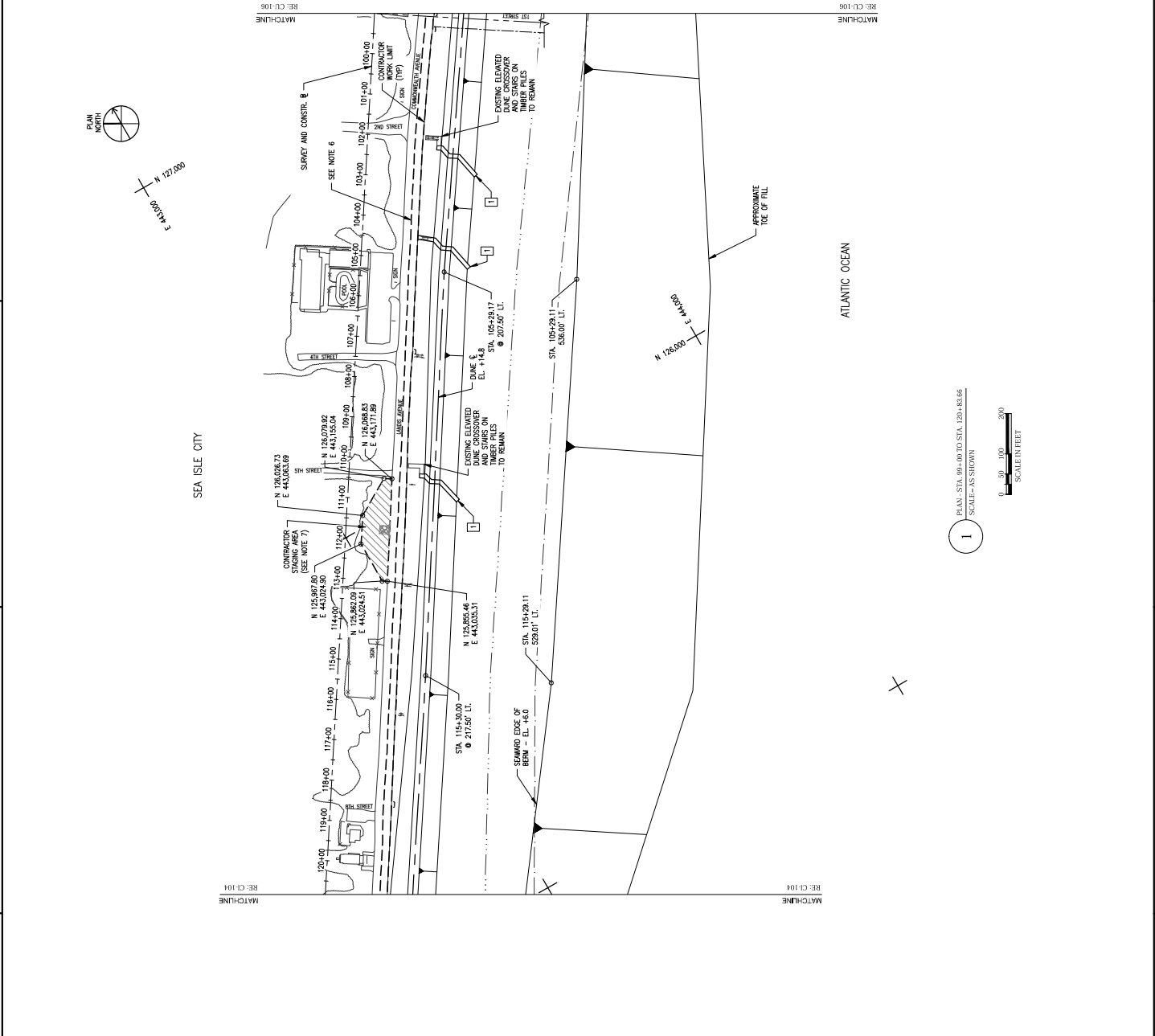
DATE	BY	CHECKED BY	DESCRIPTION



POINT STA.	NORTHING	EASTING	DISTANCE (FT)	DIRECTION
125+31.31	12517.24	44353.66	1630.84	S 28°31'51" W
164+81.85	12535.40	44155.24	1284.26	S 2°46'31" W
154+85.21	12277.78	44292.14	307.46	S 27°27'38" W
204+83.59	11959.48	43711.82	87.26	S 17°17'59" W
235+84.35	11494.82	43212.82	194.26	S 16°07'02" W
255+80.53	11343.77	43039.88	1385.59	S 23°12'05" W
268+86.33	11205.14	42837.87	2297.87	S 23°12'05" W
281+83.90	11072.82	42646.56	2442.59	S 23°12'05" W
314+28.49	10788.57	42384.74	1125.82	S 23°12'05" W
327+62.31	10658.86	42321.89	710.26	S 28°41'56" W
334+62.58	10623.19	42307.72	505.18	S 28°41'56" W
338+87.74	10578.50	42316.43	767.88	S 49°00'07" W
347+55.72	10519.53	42133.29	444.65	S 49°00'07" W
351+89.77	10482.40	421562.61	282.67	S 71°59'57" W
354+82.44	10475.19	431562.61	408.75	S 71°59'57" W
358+91.19	10467.83	431175.88	158.49	N 76°16'17" W
360+89.88	10466.44	431015.82		

ID	BEGINNING STA.	MORNING	EVENING	AZIMUTH NORTH
U014	105+28.11	126897.81	443595.97	123°17'54"
U015	115+28.11	125729.83	442918.43	123°17'54"
U016	125+28.11	124561.85	442240.89	123°17'54"
U017	135+28.11	123393.87	441563.35	123°17'54"
U018	145+28.11	122225.89	440885.81	123°17'54"
U019	155+28.11	121057.91	440208.27	123°17'54"
U020	165+28.11	119889.93	439530.73	123°17'54"
U021	175+28.11	118721.95	438853.19	123°17'54"
U022	185+28.11	117553.97	438175.65	123°17'54"
U023	195+28.11	116385.99	437498.11	123°17'54"
U024	193+86.89	119785.17	439185.34	120°41'56"
U025	201+86.89	119178.28	438672.42	120°41'56"
U026	209+86.89	118571.39	438159.50	120°41'56"
U027	217+86.89	117964.50	437646.58	120°41'56"
U028	225+86.89	117357.61	437133.66	120°41'56"
U029	233+86.89	116750.72	436620.74	120°41'56"
U030	241+86.89	116143.83	436107.82	120°41'56"
U031	249+86.89	115536.94	435594.90	120°41'56"
U032	257+86.89	114930.05	435081.98	120°41'56"
U033	265+86.89	114323.16	434569.06	120°41'56"
U034	273+86.89	113716.27	434056.14	120°41'56"
U035	281+86.89	113109.38	433543.22	120°41'56"
U036	289+86.89	112502.49	433030.30	120°41'56"
U037	297+86.89	111895.60	432517.38	120°41'56"
U038	305+86.89	111288.71	431904.46	120°41'56"
U039	313+86.89	110681.82	431391.54	120°41'56"
U040	321+86.89	110074.93	430878.62	120°41'56"
U041	329+86.89	109468.04	430365.70	120°41'56"
U042	337+86.89	108861.15	429852.78	120°41'56"
U043	345+86.89	108254.26	429339.86	120°41'56"
U044	353+86.89	107647.37	428826.94	120°41'56"
U045	361+86.89	107040.48	428314.02	120°41'56"
U046	369+86.89	106433.59	427801.10	120°41'56"

NO.	DESCRIPTION	DATE	BY	CHECKED	APPROVED
1	ISSUED FOR CONSTRUCTION	10/15/10	J. J. ...	J. J. ...	J. J. ...
2	ISSUED FOR CONSTRUCTION	10/15/10	J. J. ...	J. J. ...	J. J. ...
3	ISSUED FOR CONSTRUCTION	10/15/10	J. J. ...	J. J. ...	J. J. ...
4	ISSUED FOR CONSTRUCTION	10/15/10	J. J. ...	J. J. ...	J. J. ...
5	ISSUED FOR CONSTRUCTION	10/15/10	J. J. ...	J. J. ...	J. J. ...
6	ISSUED FOR CONSTRUCTION	10/15/10	J. J. ...	J. J. ...	J. J. ...
7	ISSUED FOR CONSTRUCTION	10/15/10	J. J. ...	J. J. ...	J. J. ...
8	ISSUED FOR CONSTRUCTION	10/15/10	J. J. ...	J. J. ...	J. J. ...
9	ISSUED FOR CONSTRUCTION	10/15/10	J. J. ...	J. J. ...	J. J. ...
10	ISSUED FOR CONSTRUCTION	10/15/10	J. J. ...	J. J. ...	J. J. ...



SEA ISLE CITY

ATLANTIC OCEAN

APPROXIMATE TOE OF FILL

SCALE - AS SHOWN

1 PLAN - STA. 99+00 TO STA. 120+83166

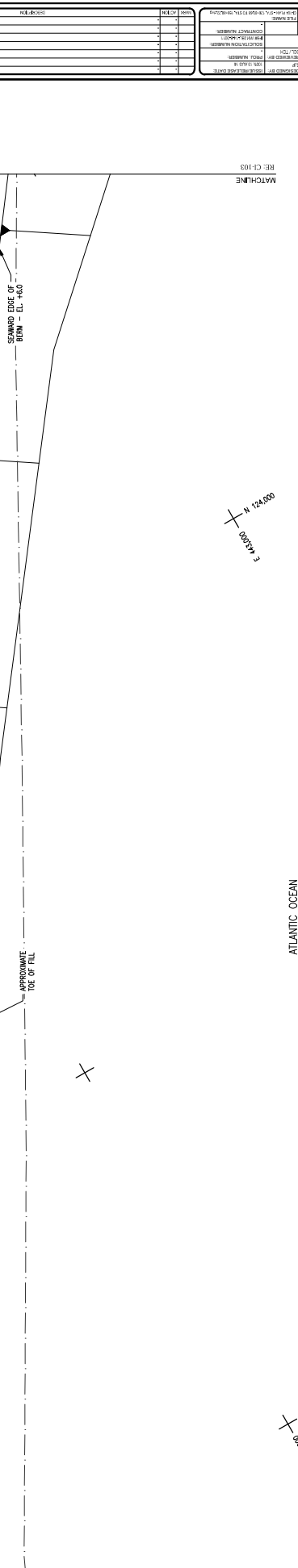
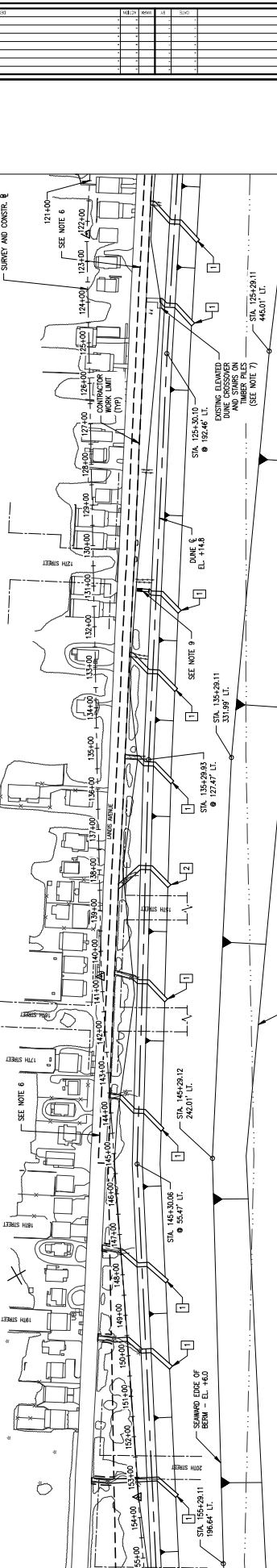
SCALE IN FEET

0 50 100 200

DATE	ISSUE	DESCRIPTION

PROJECT INFORMATION	
PROJECT NO.	
DATE	
DRAWN BY	
CHECKED BY	
SCALE	
CONTRACT INFORMATION	
CONTRACT NO.	
CONTRACT TITLE	
CONTRACT LOCATION	
CONTRACT NUMBER	
CONTRACT DATE	
DESIGNER INFORMATION	
FIRM NAME	
ADDRESS	
CITY	
STATE	
ZIP	
OWNER INFORMATION	
OWNER NAME	
OWNER ADDRESS	
CITY	
STATE	
ZIP	

GENERAL NOTES	
1.	SEE SHEET C-001 FOR GENERAL NOTES AND LEGEND.
2.	THE EXISTING SANITIZED SEWER PIPE LOCATED BETWEEN 1ST ST. AND 15TH ST. SHALL BE PROTECTED DURING CONSTRUCTION. THE COLLARS TO BE UNDERWRITTEN.
3.	TWELFTH ST., FIFTEENTH ST., SIXTEENTH ST., TWENTY ST. AND TWENTY-THIRD ST. ARE PAVED SURFACES SHOWN FOR REFERENCE ONLY.
4.	SEE SHEET C-400 FOR TABULATION OF DUNE CROSSOVERS.
5.	CONTRACTOR WORK LIMIT POINTS ARE NOT SHOWN FOR CLARITY. SEE SHEET C-102 FOR COORDINATES OF CONTRACTOR WORK LIMIT.
6.	BETWEEN STA. 65+11 TO STA. 143+25 THE CONTRACTOR WORK LIMIT SHALL BE THE EXISTING DUNE CROSSOVERS. CONTRACTOR WORK SHALL BE CLOSED ONLY IN A MAXIMUM OF 1,000 FOOT INCREMENTS AT A TIME TO MAINTAIN THE EXISTING DUNE CROSSOVERS. SEE SPECIFICATIONS.
7.	DUNE AND CROSSOVERS SHALL BE TIED INTO EXISTING WOOD CROSSOVERS. EXISTING RAILING SHALL BE CUT OFF AND REMOVED AS NECESSARY.
8.	ALL EXISTING CURBS SHALL BE REPAIRED WITHIN THE PROJECT LIMITS. FOR REQUIREMENTS SEE SPECIFICATIONS.
9.	COUNTY WOODY CURBS AND LANSING IN ACCORDANCE WITH PROPOSED TOWER ELEVATED DUNE CROSSOVER 12TH STREET REFERENCE DRAWINGS 1 AND 2 OF 2.



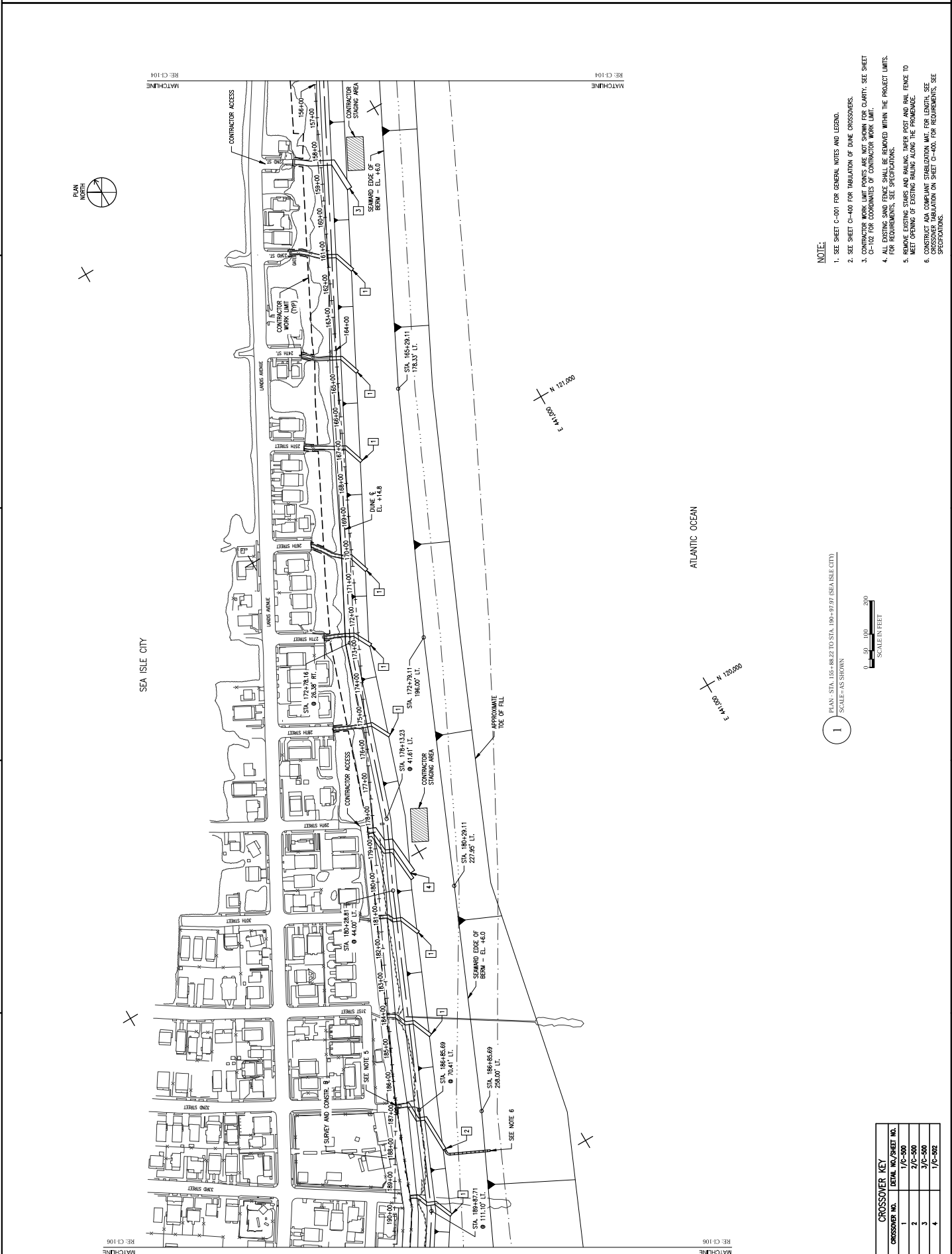
1 PLAN- STA. 128+83.66 TO STA. 158+88.22 (SEA ISLE CITY)
 SCALE= AS SHOWN

1 PLAN- STA. 128+83.66 TO STA. 158+88.22 (SEA ISLE CITY)
 SCALE= AS SHOWN



CROSSOVER NO.	DETAIL NO./SHEET NO.
1	1/C-500
2	1/C-502

CROSSOVER NO.	DETAIL NO./SHEET NO.
1	1/C-500
2	1/C-502



- NOTE:**
1. SEE SHEET C-001 FOR GENERAL NOTES AND LEGEND.
 2. SEE SHEET C-400 FOR TUBULATION OF DUNE CROSSOVERS.
 3. CONTRACTOR WORK LIMIT POINTS ARE NOT SHOWN FOR CLARITY. SEE SHEET C-100 FOR COORDINATES OF CONTRACTOR WORK LIMIT.
 4. ALL EXISTING SAND FENCE SHALL BE REMOVED WITHIN THE PROJECT LIMITS. FOR REQUIREMENTS, SEE SPECIFICATIONS.
 5. REMOVE EXISTING STUMPS AND RAILING, TAPER POST AND RAIL FENCE TO MEET OPENING OF EXISTING RAILING ALONG THE FRAMING.
 6. CONSTRUCT ADA COMPLIANT STABILIZATION MAT FOR LENGTH, SEE SPECIFICATIONS. TUBULATION ON SHEET C-400, FOR REQUIREMENTS, SEE SPECIFICATIONS.

1 PLAN: STA. 185+88.22 TO STA. 190+17.07 (SEA ISLE CITY)
SCALE=AS SHOWN



CROSSOVER KEY	
CROSSOVER NO.	DETAIL NO./SHEET NO.
1	1/C-500
2	2/C-500
3	3/C-500
4	4/C-502

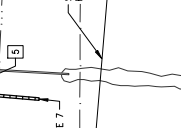
US ARMY CORPS OF ENGINEERS DISTRICT 10 MILITARY DISTRICT OF THE PACIFIC 3161 MIAMI AVENUE FORT MONROE, VIRGINIA 22061-5000 PHONE (703) 616-4700 FAX (703) 616-6600 WWW.USACE.DISTRICT10.PA.USACE.MIL		PROJECT NO. 101011-0000 DRAWING NO. CH-107 SHEET NO. CH-107 DATE 01/12/00 DRAWN BY [REDACTED] CHECKED BY [REDACTED] DESIGNED BY [REDACTED]		PLAN STA. 190+87.07 TO STA. 225+98.23 BEACH-1L - INITIAL CONSTRUCTION OCEAN CITY, MARYLAND COUNTY, NEW JERSEY SHEET NO. CH-107 SHEET NAME CH-107	
---	--	--	--	--	--

CH-107

SHEET NUMBER



- NOTES:**
- SEE SHEET CH-100 FOR GENERAL NOTES AND LEGEND.
 - EXISTING PAVILION ON WOOD PILES AT STA. 212+44.5 SHALL REMAIN.
 - PLACE BEACH FILL AROUND PILES TO REQUIRED FINISH GRADE.
 - SEE SHEET CH-400 FOR TABULATION OF DUNE CROSSOVERS.
 - CONSTRUCT WORK BERTHING AND WALKWAY FOR BEACH. SEE SHEET CH-102 FOR COORDINATES OF CONTRACTOR WORK LIMIT.
 - ALL EXISTING SAND FENCE SHALL BE REMOVED WITHIN THE PROJECT LIMITS.
 - REMOVE EXISTING STAIRS AND DRAINAGE TYPED ALIGNMENT OF THE POST AND RAIL FENCE TO MEET OPENING OF EXISTING WALKWAY ALONG THE PROMENADE.
 - CONSTRUCT ADA COMPLIANT STABILIZATION MAT, FOR LENGTH, SEE CROSSOVER TABULATION ON SHEET CH-400. FOR REQUIREMENTS, SEE SPECIFICATIONS.



SCALE=AS SHOWN

CROSSOVER NO.	DETAIL NO./SHEET NO.
1	1/C-500
2	2/C-500
3	3/C-500
4	4/C-502
5	2/C-502

RE: CH-107 MATCHLINE

RE: CH-105 MATCHLINE

RE: CH-105 MATCHLINE

RE: CH-107 MATCHLINE

RE: CH-107 MATCHLINE



NO.	DESCRIPTION
1	PLAN
2	SECTION
3	SECTION
4	SECTION

PROJECT NO.	17-000
DATE	10/2017
PROJECT TITLE	SEASIDE WALKWAY IMPROVEMENTS
CLIENT	SEA ISLE CITY
DESIGNED BY	JEA
CHECKED BY	JEA
IN CHARGE	JEA
SCALE	AS SHOWN

SEA ISLE CITY
 BEACHES & SHORES
 OCEAN COUNTY, NEW JERSEY
 PROJECT NO. 17-000
 SHEET NO. 17C-500
 CONTRACT NO. 17C-500

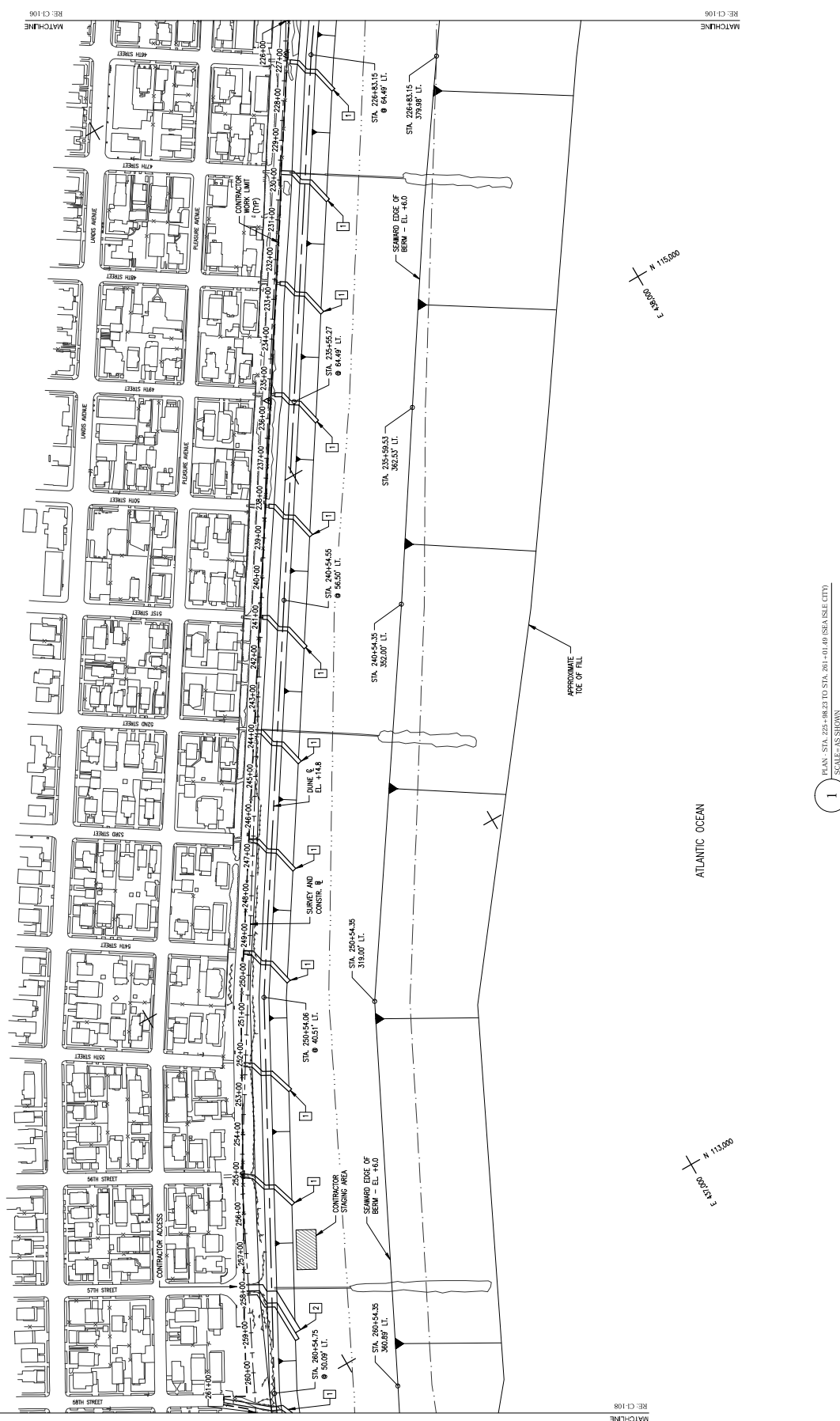
SHEET NUMBER
CH-107



SEA ISLE CITY

RE: C-106

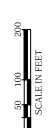
RE: C-106



NOTE:

1. SEE SHEET C-001 FOR GENERAL NOTES AND LEGEND.
2. SEE SHEET C-400 FOR TABULATION OF DUNE CROSSOVERS.
3. CONTRACTOR WORK LIMIT POINTS ARE NOT SHOWN FOR CLARITY. SEE SHEET C-102 FOR COORDINATES OF CONTRACTOR WORK LIMIT.
4. ALL EXISTING SAND FENCE SHALL BE REMOVED WITHIN THE PROJECT LIMITS. FOR REQUIREMENTS, SEE SPECIFICATIONS.

1 PLAN - STA. 225+86.22 TO STA. 261+01.40 (SEA ISLE CITY)
 SCALE = AS SHOWN



CROSSOVER KEY	DETAIL NO./SHEET NO.
1	1/C-500
2	1/C-501

RE: C-108

RE: C-108

MATCHLINE

MATCHLINE

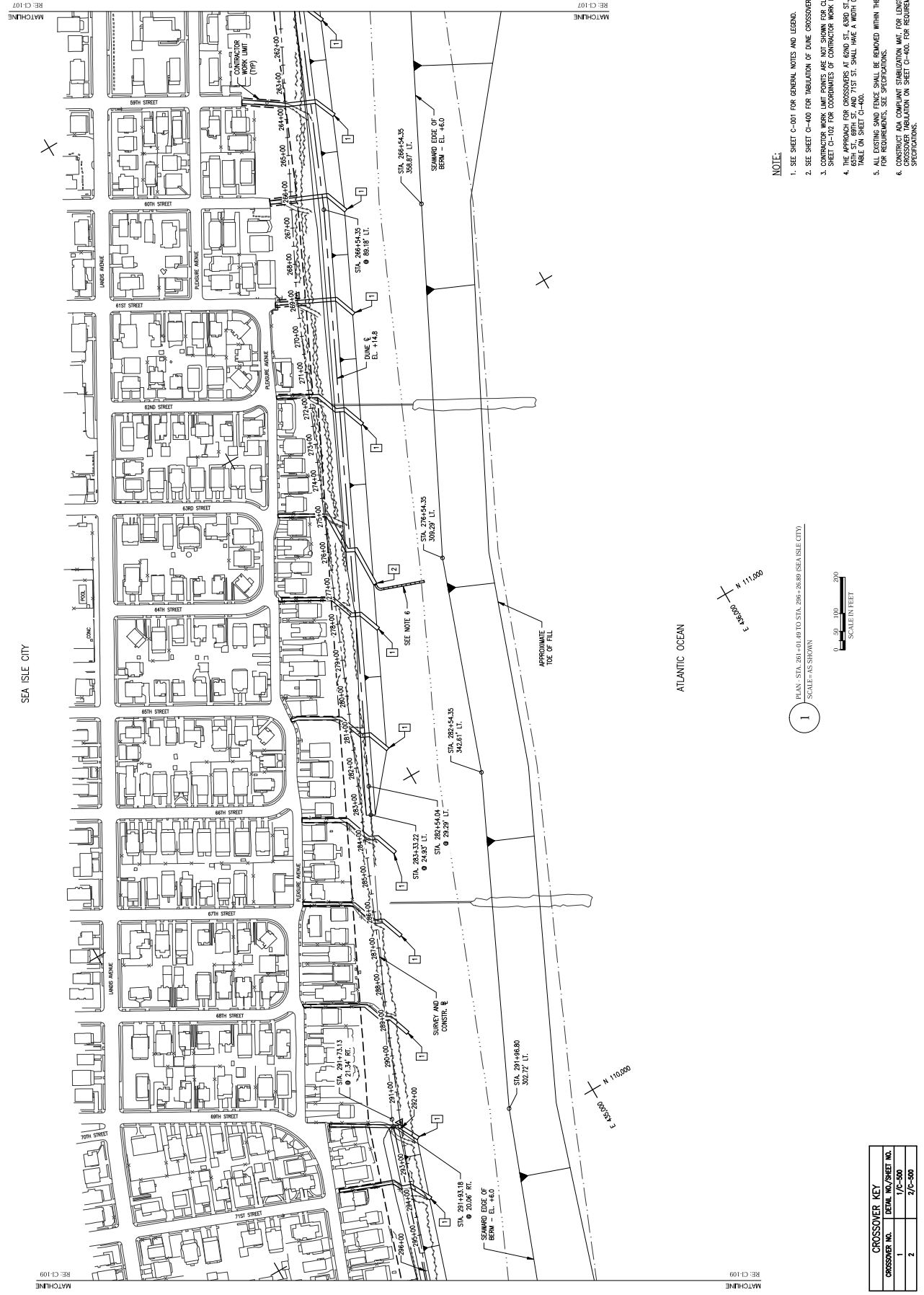
NO.	DESCRIPTION	DATE	BY	CHECKED

PROJECT NO.	
DATE	
DRAWN BY	
CHECKED BY	
SCALE	
PROJECT NAME	
PROJECT LOCATION	
PROJECT NUMBER	
PROJECT SHEET NO.	
PROJECT SHEET TOTAL	
PROJECT SHEET DATE	
PROJECT SHEET SCALE	
PROJECT SHEET TOTAL	

SEA ISLE CITY
 PLANNING & ENGINEERING
 1000 W. PALM BEACH BLVD.
 PALM BEACH, FL 33480
 PHONE: (561) 833-1111
 FAX: (561) 833-1112
 WWW.SEAISLECI.COM

SHEET NUMBER
CH-108

SEA ISLE CITY



- NOTE:**
1. SEE SHEET C-001 FOR GENERAL NOTES AND LEGEND.
 2. SEE SHEET CH-400 FOR INDICATION OF DIKE CROSSOVERS.
 3. CONTRACTOR WORK LIMIT POINTS ARE NOT SHOWN FOR CLARITY. SEE SHEET CH-102 FOR COORDINATES OF CONTRACTOR WORK LIMIT.
 4. THE APPROACH FOR CROSSOVERS AT 60th ST., 63rd ST., 64th ST., 65th ST., 69th ST., AND 71st ST. SHALL HAVE A WIDTH OF 8FT. SEE TABLE ON SHEET CH-400.
 5. ALL EXISTING SAND FENCE SHALL BE REMOVED WITHIN THE PROJECT LIMITS. FOR REQUIREMENTS, SEE SPECIFICATIONS.
 6. THE APPROACH FOR CROSSOVERS AT 60th ST., 63rd ST., 64th ST., 65th ST., 69th ST., AND 71st ST. SHALL HAVE A WIDTH OF 8FT. SEE TABLE ON SHEET CH-400. FOR REQUIREMENTS, SEE SPECIFICATIONS.

1 PLAN - STA. 261+00.00 TO STA. 266+26.80 (SEA ISLE CITY)
 SCALE = AS SHOWN



ATLANTIC OCEAN

CROSSOVER KEY	DETAIL NO./SHEET NO.
1	1/C-500
2	2/C-500

MATCHLINE
 RE: CH-109

MATCHLINE
 RE: CH-109

NO.	DESCRIPTION	DATE
1	ISSUED FOR PERMITS	10/10/2018
2	REVISION	

DESIGNED BY	CROSSING KEY
DRAWN BY	DETAIL NO./SHEET NO.
CHECKED BY	1 / C-200
APPROVED BY	2 / C-200

CROSSOVER KEY	
CROSSOVER NO.	DETAIL NO./SHEET NO.
1	1/C-200
2	1/C-201

RE: C1108



SEA ISLE CITY

ATLANTIC OCEAN

1 PLAN - STA. 296+26.88 TO STA. 331+61.52 (SEA ISLE CITY)
SCALE - AS SHOWN



NOTES:

1. SEE SHEET C-201 FOR GENERAL NOTES AND LEGEND.
2. SEE SHEET C-400 FOR TABULATION OF DUNE CROSSINGS.
3. CONTRACTOR WORK LIMIT POINTS ARE NOT SHOWN FOR CLARITY. SEE SHEET C-102 FOR COORDINATES OF CONTRACTOR WORK LIMIT.
4. FLOW SHALL BE MAINTAINED THROUGHOUT ALL EXISTING OUTFALLS WITHIN PROJECT LIMITS.
5. INVERTS OF EXISTING OUTFALL ARE UNKNOWN.
6. EXISTING OUTFALL SHALL BE EXTENDED USING A SLOPE THAT MATCHES THE SLOPE OF THE EXISTING OUTFALL.
7. CONSTRUCT 10-TYPE A PIPE SUPPORTS AND 2-TYPE B PIPE SUPPORTS. THE TWO SEAWARD MOST PIPE SUPPORTS SHALL BE TYPE B SUPPORTS. SEE SHEET C-250 FOR DETAILS.
8. THE APPROACH FOR CROSSINGS AT 72ND ST., 73RD ST., 74TH ST., 76TH ST., 77TH ST. AND 78TH ST. SHALL HAVE A WIDTH OF 8'-1". SEE LABEL ON SHEET C-400.
9. ALL EXISTING SAND FENCE SHALL BE REMOVED WITHIN THE PROJECT LIMITS. FOR REQUIREMENTS, SEE SPECIFICATIONS.
10. CONSTRUCT IN ACCORDANCE WITH SEAWALL OUTFALL PIPE REPAIRS AT 82ND & 86TH STREETS REFERENCE DRAWINGS 1 AND 2 OF 2.

RE: C1110



ATLANTIC OCEAN

1 PLAN - STA. 296+26.88 TO STA. 331+61.52 (SEA ISLE CITY)
SCALE - AS SHOWN



NOTES:

1. SEE SHEET C-201 FOR GENERAL NOTES AND LEGEND.
2. SEE SHEET C-400 FOR TABULATION OF DUNE CROSSINGS.
3. CONTRACTOR WORK LIMIT POINTS ARE NOT SHOWN FOR CLARITY. SEE SHEET C-102 FOR COORDINATES OF CONTRACTOR WORK LIMIT.
4. FLOW SHALL BE MAINTAINED THROUGHOUT ALL EXISTING OUTFALLS WITHIN PROJECT LIMITS.
5. INVERTS OF EXISTING OUTFALL ARE UNKNOWN.
6. EXISTING OUTFALL SHALL BE EXTENDED USING A SLOPE THAT MATCHES THE SLOPE OF THE EXISTING OUTFALL.
7. CONSTRUCT 10-TYPE A PIPE SUPPORTS AND 2-TYPE B PIPE SUPPORTS. THE TWO SEAWARD MOST PIPE SUPPORTS SHALL BE TYPE B SUPPORTS. SEE SHEET C-250 FOR DETAILS.
8. THE APPROACH FOR CROSSINGS AT 72ND ST., 73RD ST., 74TH ST., 76TH ST., 77TH ST. AND 78TH ST. SHALL HAVE A WIDTH OF 8'-1". SEE LABEL ON SHEET C-400.
9. ALL EXISTING SAND FENCE SHALL BE REMOVED WITHIN THE PROJECT LIMITS. FOR REQUIREMENTS, SEE SPECIFICATIONS.
10. CONSTRUCT IN ACCORDANCE WITH SEAWALL OUTFALL PIPE REPAIRS AT 82ND & 86TH STREETS REFERENCE DRAWINGS 1 AND 2 OF 2.

